

# DATA *Nugget*

## Love that dirty water

Featured scientists: Jonathan Thompson from Harvard University and Drew Guswa from Smith College. Written by Tara Goodhue and Joshua Plisinski.

### Research Background:

Forests, wetlands, and other green spaces are natural filters for water; water is cleaned as it is used by plants and travels through soils. As green spaces are lost to make room for homes and businesses, ecosystems are less able to provide this service. Without natural filtration from green spaces, humans must build expensive water treatment systems or risk drinking contaminated water.

**Impervious surfaces**, like roads, buildings, and parking lots, do not allow water to pass through. When it rains or snows on an impervious surface, water cannot soak into soil or be used by plants. Instead, it quickly flows into nearby streams and rivers. If too much water runs off too quickly, it overwhelms local sewer systems, getting into rivers before it can be filtered. This dirty water may carry human waste and toxic materials.



Drew and students measuring river flow rate.

Impervious surfaces have become a major problem for both the health of river ecosystems, and the health of people who depend on them as a clean source of drinking water. How land is used in a **watershed**, or the network of land and rivers that flow to a single point as they empty out into the ocean, is an issue of great concern.

Jonathan is a scientist studying land use. He became interested in science after traveling around the country and working as a wilderness ranger and wildland firefighter. At the Harvard Forest, members of his lab study how land use decisions affect the environment. They used computer simulations to create maps of what New England's landscape could look like under different possible futures. Their web-tool is called the **New England Landscapes Futures Explorer**. Jonathan's lab works with Drew, a civil and environmental engineer who loves biking and hiking. Drew and his lab at Smith College are interested in the relationship between land use and water. Together, Jonathan and Drew's labs teamed up to study how future increases in impervious surfaces from new development could affect water quality in New England.

A team of scientists decided to use the web-tool to study the **Merrimack River**. The Merrimack is an important river for New England, and serves as a water source for more than 500,000 people in the region. It begins in New Hampshire, and flows through 117 miles of forests, farmland, and cities before emptying into the Atlantic Ocean.

To study the Merrimack, the scientists used their web-tool and data from two nearby similar watersheds to make predictions for the Merrimack. Combining research like this gives scientists, government organizations, and the public valuable information that can be used to help make decisions about how land should be used in the future.

Jonathan's lab used their future land use predictions to estimate the percentage of impervious surface area in the Merrimack River watershed for three future scenarios in the year 2060.

1. **Recent Trends:** This scenario takes the historical rates and patterns of land use change from 1990-2010 and projects them through 2060. This scenario imagines a future where we maintain current land use practices.
2. **Low Development:** This scenario explores a future where the people of New England shift toward a lifestyle focused on "living local" and valuing reliance on local resources. This increases the urgency to protect local landscapes, including conservation of green spaces. Rates of development are slightly lower than the Recent Trends scenario.
3. **High Development:** This scenario explores a future with a rapid increase in human population in New England, because climate change has made life in many other places more difficult. Rates of development are much higher than the Recent Trends scenario.

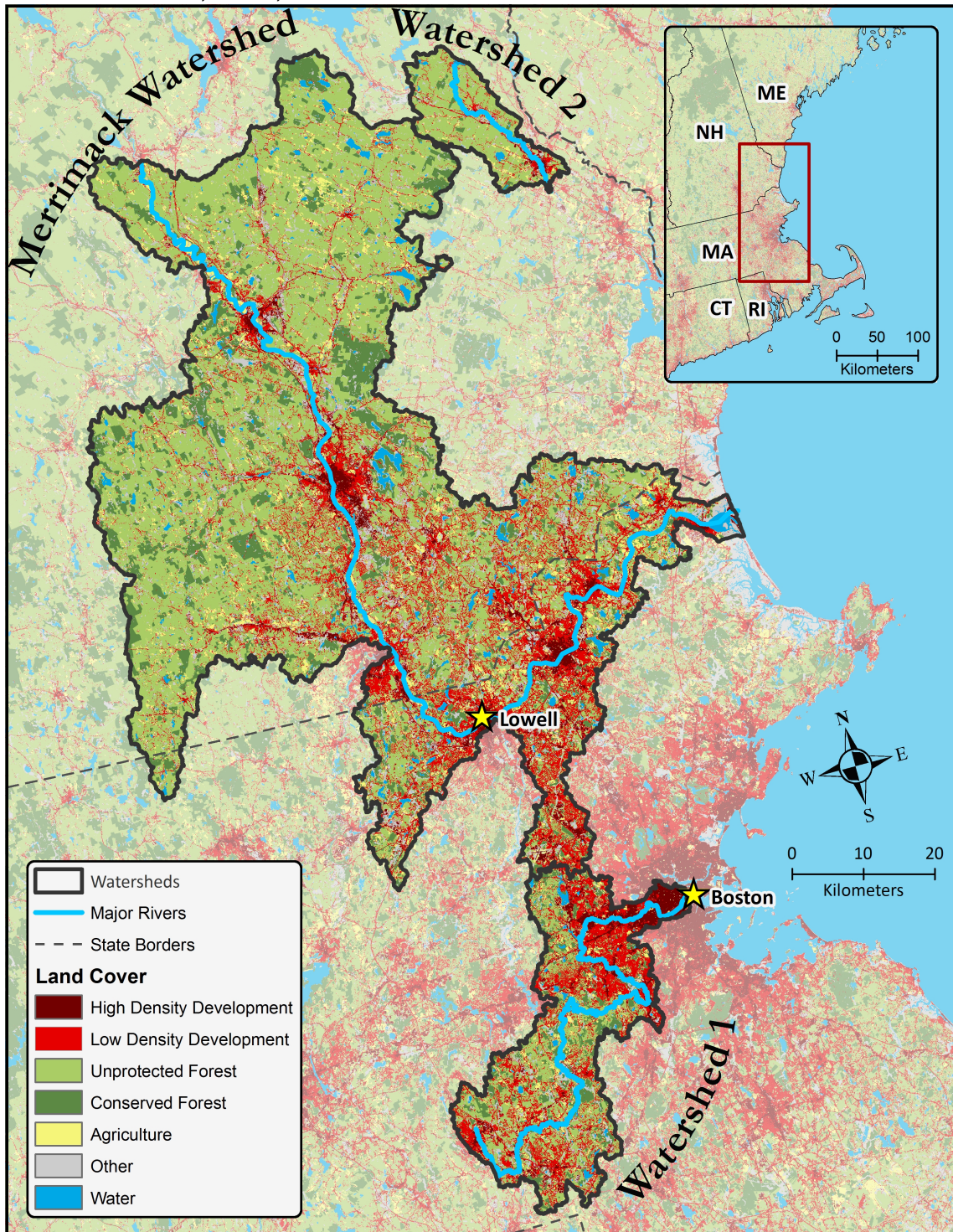
Drew's team collected data from two watersheds adjacent to the Merrimack river (see map) and calculated the **annual maximum daily flow**, or the highest level that the river in each watershed would be expected to reach each day. Higher flows likely mean more human waste and toxic materials are getting into the river.

*Scientific Question:* How will development decisions impact the future of the Merrimack River and the health of humans that rely on it?



**Watershed Map:**

- **Watershed 1**, the Charles River watershed, includes the City of Boston. Boston is a very old city, and most of its development happened a long time ago. The Charles River watershed is in the most densely populated part of New England.
- **Watershed 2**, the Cocheco Watershed is in Southern New Hampshire. This is one of the most rapidly developing parts of New England. This means that forests and fields are being cut down for houses, roads, and businesses.



*Interpret the figure:* These watersheds are similar to the Merrimack in some ways, but different in others. It is up to you to justify which watershed you think is most similar, and use the annual maximum daily flow data from that watershed to make your prediction for the Merrimack.

Which Watershed in the map above is most like the Merrimack River Watershed and in what ways is it similar and different?

*Scientific Data:*

Use the simulated data from the web-tool below, and the watershed map above, to answer the scientific question:

<b>Watershed</b>	<b>Land use scenario (2010-2060)</b>	<b>Historical 2010 percent impervious surfaces</b>	<b>Simulated 2060 percent impervious surfaces</b>	<b>Percent change impervious surfaces from 2010 to 2060</b>	<b>Historical 2010 average maximum daily flow (cms)</b>	<b>Simulated 2060 average maximum daily flow (cms)</b>	<b>Percent change maximum daily flow from 2010 to 2060</b>
Watershed 1 (near Boston)	<b>Recent Trends Continue</b>	13.1	18.5		40.4	41.8	
Watershed 1 (near Boston)	<b>Low Development Future</b>	13.1	18.3		40.4	41.4	
Watershed 1 (near Boston)	<b>High Development Future</b>	13.1	34.0		40.4	44.2	
Watershed 2 (Southern NH)	<b>Recent Trends Continue</b>	5.3	7.8		32.0	32.7	
Watershed 2 (Southern NH)	<b>Low Development Future</b>	5.3	5.8		32.0	32.1	
Watershed 2 (Southern NH)	<b>High Development Future</b>	5.3	27.0		32.0	34.7	

\* Percent (%) change is calculated as the rate of change in impervious surfaces and maximum daily flow between 2010 and 2016.

\*\* Average maximum daily flow is measured in cubic meters per second (cms).

\*\*\*Simulated data were calculated using the New England Landscapes Futures (NELF) Explorers Tool



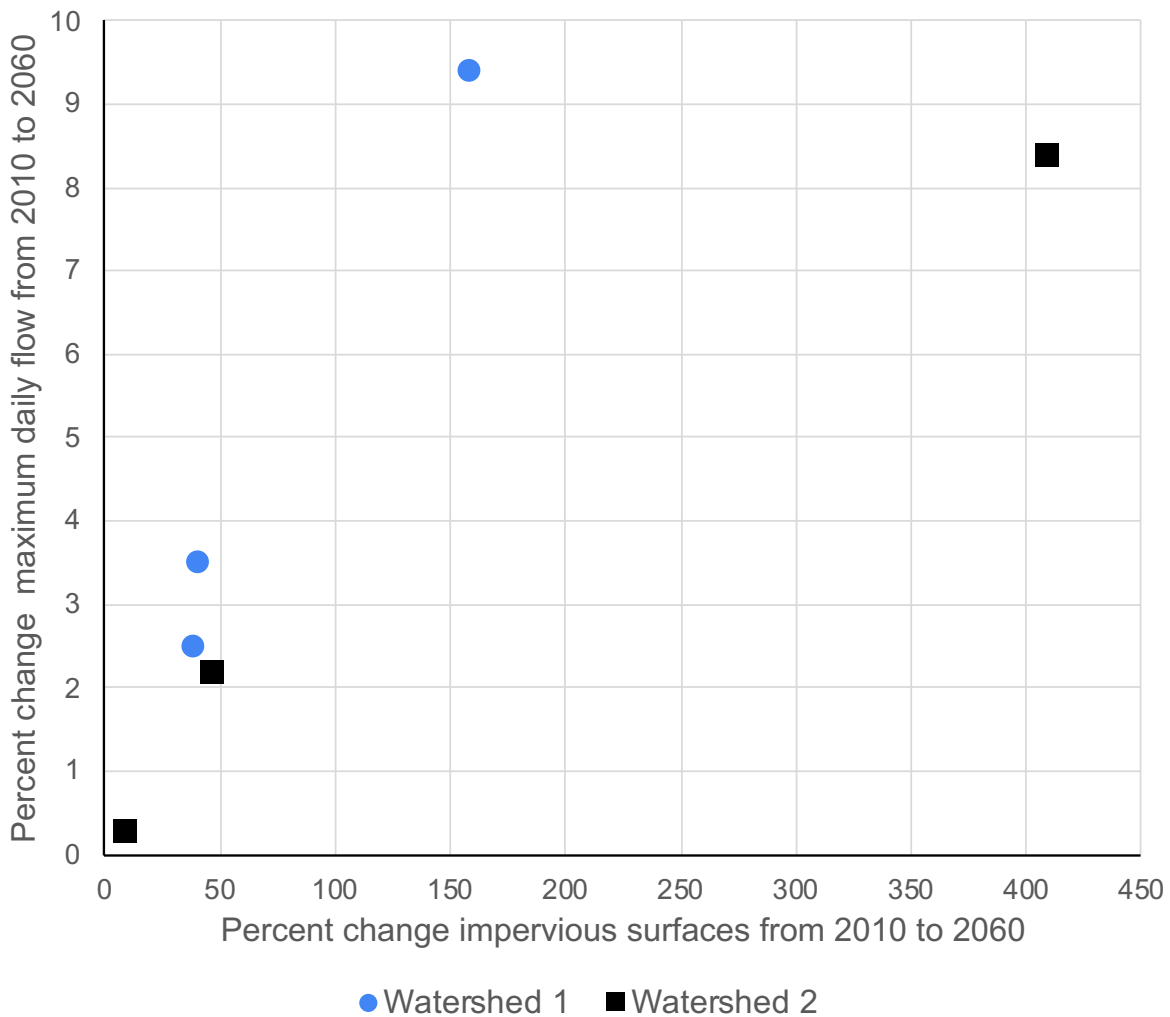
Name \_\_\_\_\_

What data will you graph to answer the scientific question?

Independent variable(s): \_\_\_\_\_

Dependent variable(s): \_\_\_\_\_

Below is a graph of the data: Identify any changes, trends, or differences you see in your graph(s). Draw arrows pointing out what you see, and write one sentence describing what you see next to each arrow.



*Interpret the data:*

Make a claim that answers the scientific question, how will development decisions impact the future of the Merrimack River and the health of humans that rely on it?

What evidence was used to write your claim? Reference specific parts of the table, graph, or map.

Explain your reasoning and why the evidence supports your claim. Connect the data back to what you learned about how development may lead to dirty water getting into rivers, and how this connects to human health.

Name\_\_\_\_\_

*Your next steps as a scientist:* Science is an ongoing process. What new question(s) should be investigated to build on this research? How do your questions build on the research that has already been done?

**Land Acknowledgement:** We collectively acknowledge that the Merruasquamack (Merrimack River) watershed is located on the traditional, ancestral, and contemporary lands of the Pennacook, Wobanaki, and Massachusetts peoples. We also recognize the continuing presence of the neighboring Wampanoag and Nipmuc peoples. We acknowledge the history of genocide and forced removal from this territory and honor, respect, and celebrate the many Indigenous peoples still connected to this land and this community.

